

CELLAR
COOLERS



Cellar Coolers

PRODUCT RANGE 2023

NEW
SYSTEMS
ON R448A

J&E Hall
International

Cellar Cooler Product Range

Ideal for beer cellars and other cooling applications down to 4°C room temperature

J & E Hall's complete range of cellar coolers provide a cost effective and reliable solution to maintain specific temperatures required for beer and wine cellars.

The indoor units, which can be wall or ceiling mounted to maximise space, utilise brewery specifications 6 fins per inch evaporator coils and are manufactured to the highest specifications to ensure long trouble free operation.

All systems operate using R448A or R449A

Three ranges of cellar cooler systems are available, the JCC range for smaller cellar cooling applications, Cellar+ and Twin Cellar+ ranges for larger capacity needs.

In addition to the refrigeration systems, we offer the JABC Ambient Beer Cooler which utilises cool outdoor ambient air to cool the cellar and so save energy costs by reducing the running time of the refrigeration systems.

Markets Served:



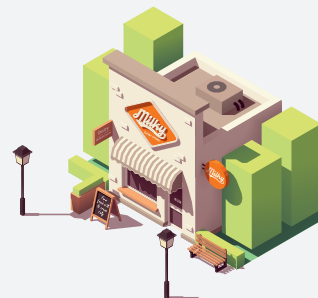
Pubs



Florists



Fruit & Vegetables



Dairy Products

JCC Cellar Coolers



Indoor Unit



Outdoor Unit



Our standard JCC range is designed to withstand the demands of everyday cellar cooling requirements.

An evaporator **Air Straightener Kit** is available as a retrofit item for indoor unit models. When fitted, it "concentrates" the discharge air and increases the athrow distance.

Features & Benefits

- ▶ Up to 25m pipe run capability for total flexibility
- ▶ Ease of installation keeps costs and time to a minimum
- ▶ 3 years manufacturer's warranty gives total peace of mind
- ▶ Low noise suitable for residential areas
- ▶ Achieves room temperature down to 4°C* so can be used for many types of product cooling
- ▶ Operates with either R448A or R449A
- ▶ Electronic controller as standard giving accurate temperature control

*** Note**

For installations that exceed 15m pipe runs then minimum room temperature achievable is 6°C. Also it is recommended that in these applications a condenser fan speed controller should be fitted within the system (available from the wholesaler).

JCC Cellar Coolers



Quick Selection Guide

| System | Indoor/Outdoor Unit | Quick Selection @ 12.7°C | | Cooling Capacities kW @ 32°C Ambient | | | | | |
|---------|----------------------|--|--|--------------------------------------|------|------|------|--------|------|
| | | Above ground (max. room m ³) | Below ground (max. room m ³) | 4°C | 8°C | 10°C | 12°C | 12.7°C | 16°C |
| JCC3-25 | JCC3-25E / J6LC26CV1 | 25 | 45 | 2.41 | 2.59 | 2.67 | 2.76 | 2.79 | 2.94 |
| JCC3-40 | JCC3-40E / J6LC41CV1 | 45 | 70 | 3.47 | 3.76 | 3.91 | 4.06 | 4.11 | 4.35 |
| JCC3-55 | JCC3-55E / J6LC56CV1 | 65 | 115 | 4.63 | 5.10 | 5.33 | 5.56 | 5.64 | 6.03 |

Above selection based on typical UK cellar construction: 32°C ambient (21°C for below ground)
 Maximum product load of 16 l/m³ entering room at max temp of 21°C
 Product cooling time 24 hours, plant running time of 18 hours a day

General Specifications

| System | System Part Number | Nominal Cooling Capacity kW | Indoor/Outdoor Unit Models | Airflow M ³ /h | Indoor Air Throw m | Noise Level dB(A) | System Pipe Sizes | | Maximum Pipe Run | | Power Supply (V/Ph/Hz) | FLA (Amps) | LRA (Amps) | Power To... | Inter Connecting Cable | Fuse Rating (Amps) |
|---------|--------------------|-----------------------------|----------------------------|---------------------------|--------------------|-------------------|-------------------|---------|------------------|------|------------------------|------------|------------|-------------|------------------------|--------------------|
| | | | | | | | Liquid | Suction | Length | Rise | | | | | | |
| JCC3-25 | N04110105 | 2.79 | JCC3-25E | 2560 | 8 | 48 | 1/4" | 1/2" | 25m | 5m | 230/1/50 | 5.3 | N/A | Indoor | 5 Core | 16 |
| | | | J6LC26CV1 | 2070 | n/a | 26 | | | | | | | | | | |
| JCC3-40 | N04110106 | 4.11 | JCC3-40E | 2270 | 8 | 48 | 1/4" | *1/2" | 25m | 8m | 230/1/50 | 8.2 | N/A | Indoor | 5 Core | 20 |
| | | | J6LC41CV1 | 2225 | n/a | 26 | | | | | | | | | | |
| JCC3-55 | N04110107 | 5.64 | JCC3-55E | 2475 | 8 | 45 | *1/4" | *5/8" | 25m | 8m | 230/1/50 | 10.2 | N/A | Indoor | 5 Core | 25 |
| | | | J6LC56CV1 | 2984 | n/a | 31 | | | | | | | | | | |

*Reducer required at indoor unit connections (JCC3-40E: 5/8" X 1/2" C x C) (JCC3-55E: 3/8" X 1/4" C X C + 3/4" X 5/8" C x C)
 Liquid line is the expansion line and as such requires insulating
 Indoor air throws are based on a final velocity of 0.4 m/s
 RLA = Rated Load Amps for system/LRA = Locked Rotor Amps for compressor

Weights & Dimensions

| Indoor Model | Width ^① (mm) | Depth ^② (mm) | Height (mm) | Weight (Kg) |
|--------------|-------------------------|-------------------------|-------------|-------------|
| JCC3-25E | 865 | 492 | 489 | 31 |
| JCC3-40E | 865 | 492 | 489 | 33 |
| JCC3-55E | 904 | 491 | 546 | 38 |

| Outdoor Model | Width ^① (mm) | Depth ^② (mm) | Height (mm) | Weight (Kg) |
|---------------|-------------------------|-------------------------|-------------|-------------|
| J6LC26CV1 | 855 | 328 | 651 | 38 |
| J6LC41CV1 | 855 | 328 | 651 | 42 |
| J6LC56CV1 | 855 | 328 | 753 | 46 |

① Indoor unit width exclude pipe services - add approximately 70mm
 ② Indoor unit depth includes fan motor

Chill Room Applications

J & E Hall cellar coolers can be used for varied applications where room temperatures down to 4°C are required.

Selections based on:

- ▶ Room temperature of +4°C
- ▶ 32°C ambient
- ▶ R448A/R449A
- ▶ Room construction 80mm panel to walls, ceiling and floor
- ▶ Average door usage
- ▶ Product loading based on maximum 64kg/m³ entering at no more than 5°C above room temperature

| MODEL | ROOM SIZE |
|---------|------------------|
| JCC3-25 | 20m ³ |
| JCC3-40 | 40m ³ |
| JCC3-55 | 55m ³ |

Criteria

| Criteria | System | System refrigerant requirements (base charge / additional) | TCO ₂ Eq |
|---|---------|--|---------------------|
| <ul style="list-style-type: none"> Noise levels are free field at 10m Nominal cooling capacities shown @ 12.7°C / 32°C ambient Systems require refrigerant base charge adding as shown for pipe runs up to 7.6m The maximum pipe run must include the rise - the rise is not additional to the length | JCC3-25 | 1.30kg R448/9A - Additional charge 12g per metre | 1.80 |
| | JCC3-40 | 1.75kg R448/9A - Additional charge 6g per metre | 2.43 |
| | JCC3-55 | 2.20kg R448/9A - Additional charge 15g per metre | 3.05 |

Important Note: Outdoor units do not come pre-charged with refrigerant



Cellar+ Systems



FOR LONGER PIPE RUNS & INCREASED CAPACITY APPLICATIONS

A powerful single indoor unit system giving exceptional cooling performance together with accurate temperature control, operating with low GWP refrigerants and capable of longer pipe runs. Ideal for the larger applications.

Features & Benefits

- ▶ Up to 50m pipe run capability for total flexibility
- ▶ Ease of installation
- ▶ Room temperature down to 4°C
- ▶ Operates with either R448A or R449A
- ▶ Single and three phase outdoor unit option
- ▶ Expansion valve fitted
- ▶ Air straighteners fitted as standard for increased air throw
- ▶ 3 years manufacturer's warranty for total peace of mind
- ▶ All outdoor units with high quality Copeland scroll compressors
- ▶ Blue fin coating on outdoor coils for added protection

Cellar+ Systems



Quick Selection Guide

| System | Indoor/ Outdoor Unit | Quick Selection @ 10°C | | Cooling Capacities kW @ 32°C Ambient | | | | | |
|----------------------|------------------------------|---|---|--------------------------------------|-----|-----|------|------|--------|
| | | Above ground (max. room m ³) | Below ground (max. room m ³) | 4°C | 6°C | 8°C | 10°C | 12°C | 12.7°C |
| Cellar Plus 70-S1/S3 | JCC2-80EV / BSCU-30-M1/M3 | 100 | 155 | 5.5 | 6.0 | 6.4 | 6.9 | 7.4 | 7.5 |
| Cellar Plus 80-S1/S3 | JCC2-80EV / BSCU-35-M1/M3 | 120 | 180 | 6.7 | 7.1 | 7.5 | 7.9 | 8.4 | 8.5 |

Above selections based on typical UK cellar construction: 32°C ambient (21°C for below ground)
Product cooling time 24 hours, plant running time of 18 hours a day
Maximum product load of 16 l/m³ entering room at max temp of 21°C

General Specifications

| System | Part Number | Evaporator Model | Power Supply V/Ph/Hz | FLC Amps | SFR Amps | Air Flow M ³ /h | Air Throw M | Noise Level @10m db(A) | Condensing Unit Model | Power Supply V/Ph/Hz | MCC Amps | LRC Amps | SFR Amps | Air Flow M ³ /h | Noise Level @10m db(A) | Max Pipe Run |
|-------------------|-------------|------------------|----------------------|----------|----------|----------------------------|-------------|------------------------|-----------------------|----------------------|----------|----------|----------|----------------------------|------------------------|--------------|
| Cellar Plus 70-S1 | N04110043 | JCC2-80EV | 230/1/50 | 1.9 | 6 | 4070 | 10 | 50 | BSCU-30-M1 | 230/1/50 | 21.5 | 82.0 | 25 | 2765 | 34 | 50 |
| Cellar Plus 70-S3 | N04110044 | JCC2-80EV | 230/1/50 | 1.9 | 6 | 4070 | 10 | 50 | BSCU-30-M3 | 400/3/50 | 10.3 | 40.0 | 16 | 2765 | 34 | 50 |
| Cellar Plus 80-S1 | N04110045 | JCC2-80EV | 230/1/50 | 1.9 | 6 | 4070 | 10 | 50 | BSCU-35-M1 | 230/1/50 | 25.0 | 97.0 | 32 | 3350 | 36 | 50 |
| Cellar Plus 80-S3 | N04110046 | JCC2-80EV | 230/1/50 | 1.9 | 6 | 4070 | 10 | 50 | BSCU-35-M3 | 400/3/50 | 9.0 | 46.0 | 20 | 3350 | 36 | 50 |

Noise levels are measured in an anechoic chamber at nominal test conditions (Room 10°C / 32°C Ta)
Air throws are based on a final velocity of 0.4m/s

Maximum pipe run is total equivalent length of piping
SFR - Suggested Fuse Rating (Motor Rated for Outdoor Unit)

Weights & Dimensions

| System | Indoor Model | Width (mm) * | Depth (mm)** | Height (mm) | Weight (kg) | Outdoor Model | Width (mm) | Depth (mm) | Height (mm) | Weight (kg) |
|----------------------|--------------|--------------|--------------|-------------|-------------|---------------|------------|------------|-------------|-------------|
| Cellar Plus 70-S1/S3 | JCC2-80EV | 1437 | 505 | 557 | 63 | BSCU-30-M1/M3 | 1108 | 478 | 649 | 77 |
| Cellar Plus 80-S1/S3 | JCC2-80EV | 1437 | 505 | 557 | 63 | BSCU-35-M1/M3 | 1334 | 530 | 864 | 97 |

* Indoor unit width excludes pipe services - add approximately 70mm

** Indoor unit depth includes fan motor with air straightener

Twin Cellar+ Systems



To expand the applications of the current cellar cooler range, three twin indoor unit systems using new outdoor units are also available. They offer lower GWP refrigerant options and longer pipe runs.

Outdoor Unit

- ▶ Single phase and three phase option
- ▶ High quality Copeland scroll compressors
- ▶ Blue fin coating on condenser coils for added protection

Features & Benefits

- ▶ Up to 50m pipe run capability for total flexibility
- ▶ Ease of installation
- ▶ Air straighteners included for increased air throw
- ▶ Expansion valve fitted
- ▶ Room temperature down to 4°C
- ▶ Operates with either R448A or R449A refrigerant
- ▶ 3 years manufacturer's warranty for total peace of mind

Twin Cellar+ Systems



Quick Selection Guide

| System | Indoor/ Outdoor Unit | Quick Selection @ 10°C | | Cooling Capacities in kW @ 32°C Ambient - R448A/R449A | | | | | |
|----------------------|--------------------------------|-----------------------------|-----------------------------|---|-----|-----|------|------|--------|
| | | Above ground (max. room m³) | Below ground (max. room m³) | 4°C | 6°C | 8°C | 10°C | 12°C | 12.7°C |
| Cellar Plus 70-T1/T3 | (2x) JCC2-40EV / BSCU-30-M1/M3 | 100 | 155 | 6.3 | 6.6 | 6.9 | 7.2 | 7.5 | 7.6 |
| Cellar Plus 80-T1/T3 | (2x) JCC2-50EV / BSCU-35-M1/M3 | 120 | 180 | 6.7 | 7.1 | 7.5 | 7.9 | 8.4 | 8.5 |
| Cellar Plus 90-T1/T3 | (2x) JCC2-60EV / BSCU-40-M1/M3 | 145 | 210 | 8.0 | 8.4 | 8.8 | 9.2 | 9.6 | 9.7 |

Above selections based on typical UK cellar construction: 32°C ambient (21°C for below ground)
Product cooling time 24 hours, plant running time of 18 hours a day

Maximum product load of 16 l/m³ entering room at max temp of 21°C

General Specifications

| System | Part Number | Evaporator Model (2x) | Power Supply V/Ph/Hz | FLC (2x) Amps | SFR Amps | Air Flow M³/h | Air Throw M | Noise Level @10m(2x) dB(A) | Condensing Unit Model | Power Supply V/Ph/Hz | MCC Amps | LRC Amps | SFR Amps | Air Flow M³/h | Noise Level @10m dB(A) | Max Pipe Run |
|-------------------|-------------|-----------------------|----------------------|---------------|----------|---------------|-------------|----------------------------|-----------------------|----------------------|----------|----------|----------|---------------|------------------------|--------------|
| Cellar Plus 70-T1 | N04110047 | JCC2-40EV | 230/1/50 | 1.0 | 6 | 2270 | 10 | 48 | BSCU-30-M1 | 230/1/50 | 21.5 | 82.0 | 25 | 2765 | 34 | 50 |
| Cellar Plus 70-T3 | N04110048 | JCC2-40EV | 230/1/50 | 1.0 | 6 | 2270 | 10 | 48 | BSCU-30-M3 | 400/3/50 | 10.3 | 40.0 | 16 | 2765 | 34 | 50 |
| Cellar Plus 80-T1 | N04110049 | JCC2-50EV | 230/1/50 | 1.0 | 6 | 2680 | 10 | 47 | BSCU-35-M1 | 230/1/50 | 25.0 | 97.0 | 32 | 3350 | 36 | 50 |
| Cellar Plus 80-T3 | N04110050 | JCC2-50EV | 230/1/50 | 1.0 | 6 | 2680 | 10 | 47 | BSCU-35-M3 | 400/3/50 | 9.0 | 46.0 | 20 | 3350 | 36 | 50 |
| Cellar Plus 90-T1 | N04110051 | JCC2-60EV | 230/1/50 | 1.0 | 6 | 2560 | 10 | 47 | BSCU-40-M1 | 230/1/50 | 28.0 | 114.0 | 40 | 4250 | 41 | 50 |
| Cellar Plus 90-T3 | N04110052 | JCC2-60EV | 230/1/50 | 1.0 | 6 | 2560 | 10 | 47 | BSCU-40-M3 | 400/3/50 | 11.0 | 50.0 | 20 | 4250 | 41 | 50 |

Noise levels are measured in an anechoic chamber at nominal test conditions (Room 10°C / 32°C Ta)
Air throws are based on a final velocity of 0.4m/s

Maximum pipe run is total equivalent length of piping
SFR - Suggested Fuse Rating (Motor Rated for Outdoor Unit)

Weights & Dimensions

| System | Indoor Model | Width (mm) * | Depth (mm)** | Height (mm) | Weight (kg) | Outdoor Model | Width (mm) | Depth (mm) | Height (mm) | Weight (kg) |
|----------------------|--------------|--------------|--------------|-------------|-------------|---------------|------------|------------|-------------|-------------|
| Cellar Plus 70-T1/T3 | JCC2-40EV | 865 | 505 | 489 | 33 | BSCU-30-M1/M3 | 1108 | 478 | 649 | 77 |
| Cellar Plus 80-T1/T3 | JCC2-50EV | 904 | 505 | 546 | 36 | BSCU-35-M1/M3 | 1334 | 530 | 864 | 97 |
| Cellar Plus 90-T1/T3 | JCC2-60EV | 904 | 504 | 546 | 38 | BSCU-40-M1/M3 | 1351 | 530 | 864 | 107 |

* Indoor unit width excludes pipe services - add approximately 70mm

** Indoor unit depth includes fan motor with air straightener

Ambient Beer Cooler



OFFERS UP TO 51% SAVINGS OVER 12 MONTHS

It is estimated that up to a quarter of a pub's energy bill can be accounted for by its cellar cooling requirements, so publicans and breweries are often looking for a more cost effective way to cool their cellars. J & E Hall's ambient beer cooler has the answer.

When the outdoor temperature falls below 8°C, the J & E Hall ambient beer cooler uses the outdoor air to cool the cellar at a fraction of the cost.

Features & Benefits

- ▶ Energy efficient
- ▶ Can be integrated with any make of cellar cooler systems
- ▶ Can substantially reduce yearly cellar cooler running costs typically by 50%+
- ▶ Easy to Install



Other Commercial products available



We also supply a comprehensive range of **commercial condensing units**

FUSION & FUSION SCROLL

A full range of reciprocating or scroll condensing units in various casing sizes with multi refrigerant options.

MT: 0.5kW - 49.4kW
LT: 0.5kW - 14.6kW



DIGITAL SINGLE & TWIN SCROLL

A comprehensive range of single and twin digital scroll condensing units from 4HP to 16HP.

4.2kW - 46.1kW



INVERTER

With an increased demand for higher efficiency systems at part load, we introduce the first of our Fusion Scroll Inverter models.

1.5kW - 25.7kW



A2L

Using the latest low GWP refrigerants these new units are designed specifically for A2L refrigerants (BS EN 378).

0.6kW - 9.3kW



CELLAR
COOLERS



ISS: 4.0_0723



J & E Hall Limited, Hansard Gate, West Meadows, Derby, DE21 6JN

T: 01332 253400

E: marketing@jehall.co.uk

TW: @jehallfridge

www.jehall.co.uk/commercialhub

All data printed is believed to be correct at the time of issue and is for guidance only.
We accept no liability for any incorrect information supplied.
For further technical specification please contact J & E Hall Limited.

J&E Hall
International