



TUBE, INSULATION,
MOUNTING CHANNEL,
CLAMPS, WALL BRACKETS
& GUARDS



A
SECTION

Copper Tube

Pipeline solutions for refrigeration and air conditioning, all to EN 12735-1. Our copper tubing is designed specifically for refrigeration and air conditioning use and accordingly cleaned, nitrogen-purged and capped.

6 Metre Coil

CODE	SIZE O.D		GAUGE	REF SUITABILITY*	
A723	1/4	x	22	R404A	R410A
A724	3/8	x	21	R404A	R410A
A725	1/2	x	21	R404A	R410A
A726	5/8	x	20	R404A	R410A



15 Metre Coil

CODE	SIZE O.D		GAUGE	REF SUITABILITY*	
A731	3/16	x	22	R404A	R410A
A732	1/4	x	22	R404A	R410A
A733	5/16	x	22	R404A	R410A
A734	3/8	x	21	R404A	R410A
A735	1/2	x	21	R404A	R410A
A736	5/8	x	20	R404A	R410A
A737	3/4	x	19	R404A	R410A
A738	7/8	x	19	R404A	R410A



30 Metre Coil

CODE	SIZE O.D		GAUGE	REF SUITABILITY*	
A739	3/16	x	22	R404A	R410A
A741	1/4	x	22	R404A	R410A
A742	5/16	x	22	R404A	R410A
A743	3/8	x	21	R404A	R410A
A744	1/2	x	21	R404A	R410A
A745	5/8	x	20	R404A	R410A
A746	3/4	x	19	R404A	R410A
A747	7/8	x	18	R404A	R410A



Pre-Insulated Copper Pipe

20m Pre-insulated copper coil allows you to install your pipework in half the time of conventional methods. Insulation manufactured to EN 13501. Fire classification - BL-s1,d0.13mm wall black insulation with tough & durable polyethylene coating. Copper Coil manufactured to EN 12735-1• Insulation more resistant to damage. Labour saving. Easy clean coating. Easy to transport & store. Durable insulation coating. Less waste, simply re-cap and re-use.

CODE	DESCRIPTION
A7160	1/4 & 3/8 x 20m Pre-Insulated 13mm Black Insulation
A7161	1/4 & 1/2 x 20m Pre-Insulated 13mm Black Insulation
A7162	1/4 & 5/8 x 20m Pre-Insulated 13mm Black Insulation
A7163	3/8 & 5/8 x 20m Pre-Insulated 13mm Black Insulation



See Q section for internal bending springs to suit this pipe

Capillary Tube

Refrigeration quality annealed Capillary Tube in 30m Coils.

CODE	BORE I.D.	WALL THICKNESS MM
A710	.026	.022
A711	.031	.022
A712	.036	.0195
A713	.042	.0215
A714	.047	.019
A715	.052	.019
A716	.064	.023



Copper Tube

3 Metre Straight

CODE	SIZE O.D	GAUGE	REF SUITABILITY*
A750	3/8	x 21	R404A R410A
A751	1/2	x 20	R404A R410A
A752	5/8	x 20	R404A R410A
A802	5/8	x 19	R404A R410A
A753	3/4	x 19	R404A R410A
A803	3/4	x 18	R404A R410A
A804	7/8	x 18	R404A R410A
A755	1-1/8	x 18	R404A R410A
A805	1-1/8	x 16	R404A R410A
A756	1-3/8	x 18	R404A
A806	1-3/8	x 16	R404A R410A
A757	1-5/8	x 18	R404A
A807	1-5/8	x 16	R404A R410A
A758	2-1/8	x 18	
A759	2-5/8	x 16	
A760	3-1/8	x 16	



A SECTION

6 Metre Straight

CODE	SIZE O.D	GAUGE	REF SUITABILITY*
A764	3/8	x 21	R404A R410A
A765	1/2	x 20	R404A R410A
A822	5/8	x 18	R404A R410A
A766	5/8	x 20	R404A R410A
A767	3/4	x 19	R404A R410A
A823	3/4	x 18	R404A R410A
A836	7/8	x 16	R404A R410A
A824	7/8	x 18	R404A R410A
A769	1-1/8	x 18	R404A R410A
A825	1-1/8	x 16	R404A R410A
A770	1-3/8	x 18	R404A
A826	1-3/8	x 16	R404A R410A
A771	1-5/8	x 18	R404A
A780	1-5/8	x 16	R404A R410A
A772	2-1/8	x 18	
A781	2-1/8	x 16	R404A
A782	2-1/8	x 14	R404A
A773	2-5/8	x 16	
A783	2-5/8	x 14	R404A
A775	2-5/8	x 18	
A784	2-5/8	x 12	R404A
A774	3-1/8	x 16	



Refrigeration Quality Copper Tube

Copper tube manufactured to BS2871/2 (refrigeration quality).

The coils are soft, the straights up to 1-3/8" are half hard and above this the tube is hard.

We offer an extensive range of pipe sizes, if the size you require is not listed then please contact our sales office on 01543 437 010.

Tube Wall Size:

SWG	=	INCH	=	MM
22	=	0.028	=	0.71
21	=	0.032	=	0.81
20	=	0.036	=	0.91
19	=	0.040	=	1.02
18	=	0.048	=	1.22
16	=	0.064	=	1.63
14	=	0.080	=	2.03
12	=	0.104	=	2.64

*Simplified guidelines detail suitability for both R404A and R410A in discharge line applications, They assume a maximum working pressure of 24.8 bar for R404A and 33.5 bar for R410A. This is based on EN378 for systems operating in a 32°C ambient with a condensing temperature of 55°C.

High Pressure Copper Tube

High strength copper alloy pipe designed for high pressure CO₂ systems with SWP of up to 120 bar (1740 psi). Conforms to PED 97/23/EC and manufactured to EN12449. High Pressure pipe is available in 2 gauges making it suitable for sub and trans-critical applications depending on system requirements. The 3m lengths are rated to 80 bar whilst the 6m lengths are rated at 80 or 120 bar.

3 Metre Straight Length (80 Bar)

CODE	SIZE O.D		WALL THICKNESS	MAX ALLOWABLE PRESSURE (BAR G)
A7109	1/2	x	0.60 mm	80
A7110	5/8	x	0.60 mm	80
A7111	3/4	x	0.60 mm	80
A7112	7/8	x	0.60 mm	80
A7113	1-1/8	x	0.60 mm	80
A7114	1-3/8	x	0.60 mm	80
A7115	1-5/8	x	0.60 mm	80



6 Metre Straight Length (120 Bar)

CODE	SIZE O.D		WALL THICKNESS	MAX ALLOWABLE PRESSURE (BAR G)
A7101	1/2	x	0.60 mm	80
A7102	5/8	x	0.75	80
A7103	3/4	x	0.90	80
A7104	7/8	x	1.00	80
A7105	1-1/8	x	1.30	80
A7106	1-3/8	x	1.60	80
A7107	1-5/8	x	1.90	80
A7108	2-1/8	x	2.50	80

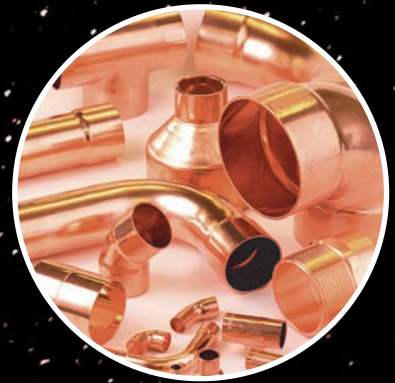


6 Metre Straight Length (120 Bar)

CODE	SIZE O.D		WALL THICKNESS	MAX ALLOWABLE PRESSURE (BAR G)
A7170	3/8	x	0.65 mm	120
A7171	1/2	x	0.85	120
A7172	5/8	x	1.05	120
A7173	3/4	x	1.30	120
A7174	7/8	x	1.50	120
A7175	1-1/8	x	1.90	120
A7176	1-3/8	x	2.30	120
A7177	1-5/8	x	2.70	120
A7178	2-1/8	x	3.55	120



The ACR universe is demanding...
so demand Lawton Tubes



LAWTON TUBES...
QUALITY & SERVICE THAT
IS OUT OF THIS WORLD

LAWTON
ACR

www.lawtontubes.co.uk

Tube Insulation

Tube Insulation: Class BL, S2, D0, pipe and coil insulation;
also Class 0, complies with UK Building Regulations and CPR.

2M Length x 9mm Wall

CODE	SIZE	BORE I.D	LENGTHS/CARTON
A8075	06-9	1/4	176
A8076	10-9	3/8	133
A8077	12-9	1/2	117
A8078	15-9	5/8	96
A8079	20-9	3/4	68
A8080	22-9	7/8	68
A8081	28-9	1-1/8	49
A8082	35-9	1-3/8	38
A8083	42-9	1-5/8	30
A8084	54-9	2-1/8	23



2M Length x 13mm Wall

CODE	SIZE	BORE I.D	LENGTHS/CARTON
A8095	06-13	1/4	110
A8096	10-13	3/8	86
A8097	12-13	1/2	81
A8098	15-13	5/8	68
A8099	20-13	3/4	49
A8100	22-13	7/8	49
A8101	28-13	1-1/8	39
A8102	35-13	1-3/8	29
A8103	42-13	1-5/8	24
A8104	54-13	2-1/8	17
A8105	67-13	2-5/8	13
A8106	80-13	3-1/8	12



2M Length x 19mm Wall

CODE	SIZE	BORE I.D	LENGTHS/CARTON
A8115	10-19	3/8	49
A8116	12-19	1/2	44
A8117	15-19	5/8	39
A8118	20-19	3/4	33
A8119	22-19	7/8	32
A8120	28-19	1-1/8	24
A8121	35-19	1-3/8	22
A8122	42-19	1-5/8	20
A8123	54-19	2-1/8	16
A8124	67-19	2-5/8	12
A8125	80-19	3-1/8	10
A8126	89-19	3-5/8	8

EUROBATEX®



2M Length x 25mm Wall

CODE	SIZE	BORE I.D	LENGTHS/CARTON
A8045	15-25	5/8	25
A8046	20-25	3/4	25
A8047	22-25	7/8	21
A8048	28-25	1-1/8	20
A8049	35-25	1-3/8	16
A8050	42-25	1-5/8	13
A8051	54-25	2-1/8	11
A8052	67-25	2-5/8	6
A8053	80-25	3-1/8	8
A8054	89-25	3-5/8	6

Tube Insulation

Supplied coiled in a bag to prevent wastage and reduce joints.
15m lengths.

9mm Wall

CODE	SIZE	BORE I.D
A8030	06-9	1/4
A8031	10-9	3/8
A8032	12-9	1/2
A8033	15-9	5/8
A8034	20-9	3/4
A8035	22-9	7/8
A8036	28-9	1-1/8

13mm Wall

CODE	SIZE	BORE I.D
A8037	06-13	1/4
A8038	10-13	3/8
A8039	12-13	1/2
A8040	15-13	5/8
A8041	20-13	3/4
A8042	22-13	7/8
A8043	28-13	1-1/8



**UNION
FOAM**



Sheet Insulation

2M x 0.5m Sheet (Class B, s3, d0/Class 0)

CODE	THICKNESS	L X W (M)
A401	9mm	2 x 0.5
A402	13mm	2 x 0.5
A403	19mm	2 x 0.5
A404	25mm	2 x 0.5



Uniload Insulation

Uniload is 42mm x 19mm insulation cut in half then into 1 meter lengths for fitting over channel. Helps prevent pipe insulation wear and tear when using channel type pipe supports.

CODE	SIZE (MM)	LENGTH (M)
A8200	42 W x 19 H	1



Accessories

Adhesive Tape (Class B, s2, d0/Class 0)

CODE	DESCRIPTION
A410	10m Roll
A411	15m Roll



Adhesive

CODE	DESCRIPTION
A415	250 ml c/w Brush
A416	500 ml Tin
A417	1Litre Tin



Paint

CODE	DESCRIPTION
A421	3/4 Litre Grey
A422	3/4 Litre Black
A423	2.5 Litre Black



See Q Section for
3pc paint brush set



Home Air Conditioning

Keeping cool has never looked this good

The UK's weather is famously unpredictable and the summers are now longer and hotter – making everyday home life that little bit more challenging. As more of us are now working from home it can be a struggle to keep our houses at a comfortable temperature all year-round.

Sleep well, live well, work well

Your home should always be a haven of comfort and that means the right temperature, day or night, no matter what the UK weather brings. Whether it's a cold start to the working day, a relaxing lunch in the midday sun, or the gentle cooling of your bedroom on a hot summer night, it's easy to achieve the perfect atmosphere with quiet and stylish air conditioners from Mitsubishi Electric.

Our Premium, Zen and Elegance series models offer total versatility, full Wi-Fi enabled temperature control and low running costs in styles to suit all budgets and any room. The Premium series comes with our unique built-in Plasma Quad technology which filters out the 6 most common airborne pollutants to offer year-round purified air and complete relief for asthma sufferers.

You can rest assured that Mitsubishi Electric has everything you need to achieve the perfect temperature-controlled environment for your home.

For more information on the options available to you visit:
www.fsw.uk.com



Email: acassist@fsw.uk.com
 Call AC Assist 01189 305 110



Virginia Cork Insulation Tape

Virginia is the premium product of its type. It may be used for either hot or cold temperature applications within its continuous duty service temperature range of -29°C to 93°C. Premium is designed to be used on pipes or tubes, in commercial or residential buildings, A/C units, refrigerated units and other similar types of applications. Premium will stop dripping caused by pipe condensation, will adhere to metal and will not crack or dry out. Premium is a self adhering tape.



CODE	DESCRIPTION
A120	Virginia Premium Cork Insulation Tape 2" x 1/8" x 30ft

Duct Tape

Cloth Duct Tape: Suitable for a wide range of masking, marking, light duty sealing, holding and bundling applications, easy tear tape. 50mm W x 50m Long.

Soft Aluminum Foil Duct Tape: 48mm W x 46 M long wide, working temperature of -29°C to +126°C



CODE	DESCRIPTION
A119	Cloth Duct Tape (50 mm x 50 M)
A125	Aluminium Foil Duct Tape (48 mm x 46 M)

Expanding Foams

3 Sizes of expanding foam available, **Foam Polyfilla** available in 300ml can. **Diversitech Foam Sealant** is a larger can at 568ml, and **Everbuild** quick setting fire foam aerosol 750ml.

CODE	DESCRIPTION
A132	Polyfilla Expanding Foam (300 ml Aerosol)
A131	Foam Sealant (568 ml Aerosol)
A137	Everbuild B2 Hand Held Fire Foam Aerosol



Grab Adhesive

EVO-STIK Sticks Like Sh*t Adhesive bonds to porous, non-porous and wet surfaces and even works under water. Bonds to most surfaces including wood, concrete, brick, plaster, glass, ceramics, metals, rigid pvc, grp insulation boards and foam polystyrene.

CODE	DESCRIPTION
M171	Evo-Stik Clear Grab Adhesive
M172	Evo-Stik White Grab Adhesive



Silicone Sealant

A one part flexible fast curing silicone sealant specifically designed for cold rooms and refrigeration applications. Available in Translucent and White.

Conforms to BS5889 Type B - ISO 9047 - DIN18540F - DIN1845F

CODE	DESCRIPTION
M173	Clear Silicone Sealant (300 ml)
M174	White Silicone Sealant (300 ml)
M176	Silicone Sealant Gun



Sealing Gum

DiversiGum is a non-hardening non-corrosive sealing compound. Immediately paint-able with a usable temperature range between -4°C to 49°C. Perfect for plugging pipe opening etc through coldroom, refrigerated cabinets and brick work.

CODE	DESCRIPTION
A122	Diversigum Sealing Compound (1kg)



Aspen Xtra Quick Positioning Clips

BBJ QPC Clips are an easy to use pipe clip made from UV resistant plastic. They fit into both aluminium or slotted channel with one single twist.

Supplied in packs of 10.

CODE	SIZE
A250	1/4"
A251	3/8"
A252	1/2"
A253	5/8"
A254	3/4"
A255	7/8"
A256	1-1/8"
A257	1-3/8"

Xtra
the installer's choice



Aspen Xtra Suspenders (Metal Hangers)

Zinc passivated metal rod hanger perfect for supporting air conditioning line set pairs. Fits both M8 & M10 Rod. Rapid 2 pipe installation. Avoids need for cable tray. Ideal for when you need to meet fire regulations. Max recommended distance between clamps 1.2m.

Supplied in packs of 10.

CODE	MODEL	TO SUIT
A986	Size Two Suspenders	3/8 & 5/8 Pipe*
A987	Size Three Suspenders	1/2 & 7/8 Pipe*
A988	Size Four Suspenders	5/8 & 1-1/8 Pipe*

* Approximate Pipe Sizes (allowing for Insulation)

Xtra
the installer's choice



Aspen Xtra Grip Lock

Part of the Aspen Xtra range these versatile clips mounts to any surface. Ideal for line sets. Fits directly to wall or ceiling. Hinged for rapid installation. Space for electrical cables and condensate hose.

Supplied in packs of 10.

CODE	MODEL	TO SUIT
A280	Size One Grip Lock	1/4 & 1/2 Pipe*
A281	Size Two Grip Lock	3/8 & 5/8 Pipe*
A282	Size Three Grip Lock	1/2 & 7/8 Pipe*
A283	Size Four Grip Lock	5/8 & 1-1/8 Pipe*

* Approximate Pipe Sizes (allowing for 13mm Insulation)

Xtra
the installer's choice



Elite Quick Fit Clip

Originally designed for fixing armoured cable, but also perfect for fixing smaller suction and liquid pipe runs with 9 or 13mm insulation. Quickly fixes via a single 6mm hole, and its oversized cable tie style strap, wraps nicely around the insulation without damaging it.

*Comfortably supports up to 1/4 & 5/8 Pipe with 13mm wall lagging without crushing the lagging too much. (see image right)

Supplied in packs of 25.

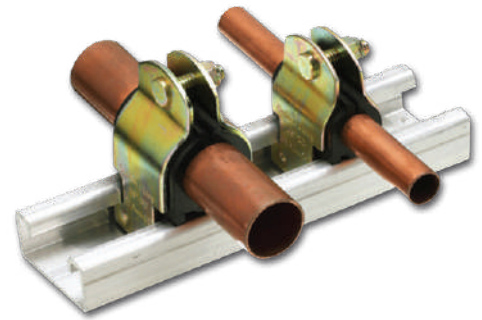
CODE	MODEL	TO SUIT
L348	Elite Quickfit Clip	1/4 & 5/8 Pipe*



Tube Clamps

Tube clamps to fit aluminium or galvanised steel channel.

CODE	MODEL	TO SUIT
A199	538-1/4	1/4"
A201	538-3/8	3/8"
A202	538-1/2	1/2"
A203	538-5/8	5/8"
A204	538-3/4	3/4"
A205	538-7/8	7/8"
A206	538-1-1/8	1-1/8"
A207	538-1-3/8	1-3/8"
A208	538-1-5/8	1-5/8"
A209	538-2-1/8	2-1/8"
A210	538-2-5/8	2-5/8"
A211	538-3-1/8	3-1/8"
A212	538-3-5/8	3-5/8"
A213	538-4-1/8	4-1/8"



Rubber Lined Clamps

Clamps for mounting on 8mm and 10mm threaded rod.

CODE	MODEL	TO SUIT (MM)
A230	EC/8/10	15-20
A231	EC/8/11	21-25
A232	EC/8/12	26-31
A233	EC/8/13	32-36
A235	EC/8/14	42-46
A236	EC/8/15	46-50
A237	EC/8/16	50-54
A238	EC/8/17	56-60
A239	EC/8/18	68-73
A240	EC/8/19	75-80
A242	EC/8/22	97-102

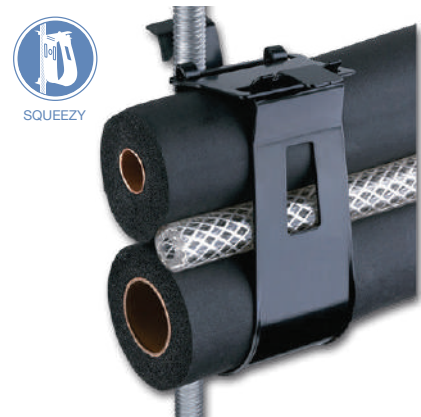


Squeezy~Fit Threaded Rod Hangers

These supports fit onto either 8mm or 10mm threaded rod. By simply squeezing the tips together, the spring steel rod hanger can be fitted or adjusted in seconds, even after the refrigerant pipes have been installed.

Supplied in packs of 10.

CODE	MODEL	TO SUIT
A899	TRH-1	1/4 & 1/2
A900	TRH-2	3/8 & 5/8
A901	TRH-3	1/2 & 7/8
A902	TRH-4	5/8 & 1-1/8



Squeezy - Grip-Fit Clamps

The asymmetric design provides a perfect fit for any one of four pairs of suction and liquid pipes. An 8mm clearance hole allows the clamp to be directly fitted to any flat surface, such as a wall or ceiling.

Supplied in packs of 10.

CODE	MODEL	TO SUIT
A905	GFC-1	1/4 & 1/2
A906	GFC-2	3/8 & 5/8
A907	GFC-3	1/2 & 7/8
A908	GFC-4	5/8 & 1-1/8



KLO-Shure® Clamps

Klo-Shure® clamps eliminates having to double wrap, glue and tape the insulation on strut mounted clamps. Klo-Shure® insulation coupling reduces the time required to insulate copper tubing used for refrigerant lines by providing a complete vapour barrier without gluing or taping.

Available in 4 Insulation wall thicknesses 3/8", 1/2", 3/4" & 1"



To Suit 3/8" Wall Thickness

CODE	I.D. x WALL THICKNESS
A2000	1/4 x 3/8
A2001	3/8 x 3/8
A2002	1/2 x 3/8
A2003	5/8 x 3/8
A2004	3/4 x 3/8
A2005	7/8 x 3/8
A2026	1-1/8 x 3/8
A2027	1-3/8 x 3/8
A2030	1-5/8 x 3/8
A2031	2-1/8 x 3/8

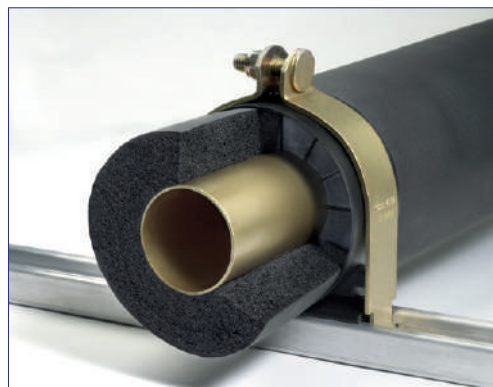


To Suit 1/2" Wall Thickness

CODE	I.D. x WALL THICKNESS
A2021	3/8 x 1/2
A2022	1/2 x 1/2
A2023	5/8 x 1/2
A2024	3/4 x 1/2
A2025	7/8 x 1/2
A2020	1-1/8 x 1/2
A2028	1-3/8 x 1/2
A2029	1-5/8 x 1/2
A2035	2-1/8 x 1/2
A2036	2-5/8 x 1/2
A2037	3-1/8 x 1/2

To Suit 3/4" Wall Thickness

CODE	I.D. x WALL THICKNESS
A2042	3/8 x 3/4
A2043	1/2 x 3/4
A2044	5/8 x 3/4
A2045	3/4 x 3/4
A2046	7/8 x 3/4
A2047	1-1/8 x 3/4
A2048	1-3/8 x 3/4
A2049	1-5/8 x 3/4
A2050	2-1/8 x 3/4
A2051	2-5/8 x 3/4
A2052	3-1/8 x 3/4



To Suit 1" Wall Thickness

CODE	I.D. x WALL THICKNESS
A2060	5/8 x 1
A2061	7/8 x 1
A2062	1-1/8 x 1
A2063	1-3/8 x 1
A2064	1-5/8 x 1
A2065	2-1/8 x 1
A2066	2-5/8 x 1
A2067	3-1/8 x 1

Aspen Xtra 3 Pipe Clip

Brand new uniquely designed 3 pipe clip, providing support for VRV/VRF systems pipework.

Wall Mount or Rod Mount to M8 & M10 Rod - Wide Metal Arms for greater pipe support.
Eliminates need for cable tray. Hinge security cover that fastens with one screw.



Recommended distance between pipe clips is 1.2 metres.

Supplied in packs of 5.

CODE	MODEL	PACK QTY	DESCRIPTION
A110	B6361	5	3 Pipe Clip Size 1
A111	B6362	5	3 Pipe Clip Size 2
A112	B6363	5	3 Pipe Clip Size 3
A113	B6364	5	3 Pipe Clip Size 4

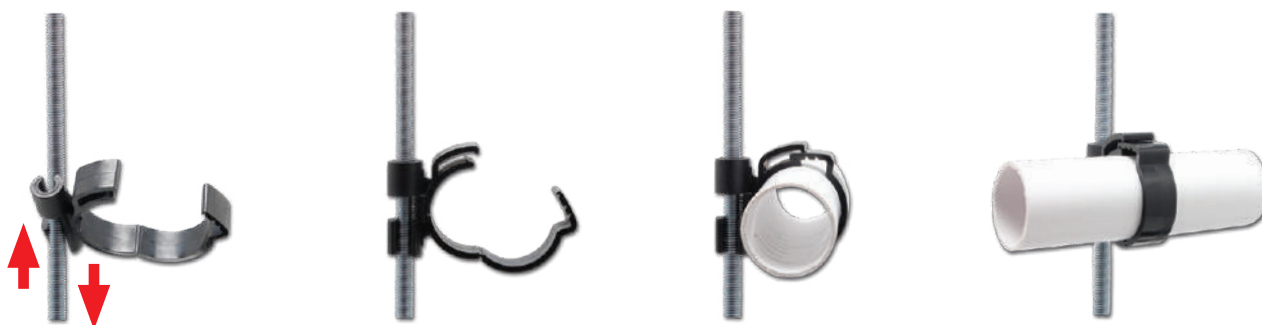
Pipe Sizing Options.

Description	Pipe Groups from	Pipe Groups to
SIZE 1	3/8" 5/8" 3/4"	1/2" 3/4" 1"
SIZE 2	1/2" 1-1/8" 3/4"	5/8" 1" 1-1/8"
SIZE 3	5/8" 1-1/8" 1-1/8"	3/4" 1-3/8" 1-1/8"
SIZE 4	7/8" 1-3/8" 1-1/8"	3/4" 1-5/8" 1-3/8"



RPC Studding Clips for Waste Pipe

Unique one-piece design manufactured from a composite polymide alloy combining strength with light weight. RPC Studding Clips are perfect for attaching our wide range of condensate waste pipe onto threaded rod.



Supplied in packs of 10.

CODE	MODEL	STUD	DESCRIPTION
A222	SC08-22	M8	Suits 21.5mm FloPlast overflow pipe (N440) on 8mm rod
A214	SC08-28	M8	Suits 3/4" (ID) Grey PVC Pipe (N469) on 8mm rod.
A224	SC08-35	M8	Suits 32mm FloPlast waste pipe (N420) and 1" Grey PVC Pipe (N458) on 8mm rod
A225	SC08-42	M8	Suits 40mm waste pipe (XX01159) on 8mm rod
A226	SC10-22	M10	Suits 21.5 mm FloPlast overflow pipe (N440) on 10 mm rod
A227	SC10-28	M10	Suits 3/4" (ID) Grey PVC Pipe on 10mm rod.
A228	SC10-35	M10	Suits 32 mm FloPlast waste pipe (N420) and 1" Grey PVC Pipe (N458) on 10 mm rod

Mounting Channel & Accessories

We offer a wide range of channel and accessories. We stock 21 x 41 plain aluminum channel & galvanised slotted channel in both 21 x 41 & 41 x 41mm.

Aluminium Plain Channel

CODE	DESCRIPTION	DIMENSIONS
A600	Aluminium Channel	3m x 22mm x 41mm

Pre Galvanised Slotted Channel

CODE	DESCRIPTION
A604	21 x 41mm Light Gauge Slotted Channel x 3 Metres
A603	21 x 41mm Medium Gauge Slotted Channel x 3 Metres
A606	41 x 41mm Light Gauge Slotted Channel x 3 Metres
A605	41 x 41mm Medium Gauge Slotted Channel x 3 Metres
A607	41 x 41mm Medium Gauge Slotted Channel x 6 Metres

Channel Capping and End Caps

CODE	DESCRIPTION
A612	CZ21/B 21 x 41mm Black PVC End Cap
A613	CZ41/B 41 x 41mm Black PVC End Cap

Channel Sockets (see page 28 for full description)

CODE	DESCRIPTION
A6070	17mm Channel Socket for 41 x 21mm Channel
A6071	17mm Channel Socket for 41 x 41mm Channel



Cantilever Arms

Wide range of Cantilever arms available, choose from single, braced or double cantilever arms.

CODE	DESCRIPTION	MAX. UDL (KG)*
A615	Single Arm 150mm Long	359 kg
A616	Single Arm 300mm Long	180 kg
A617	Single Arm 450mm Long	120 kg
A618	Single Arm 600mm Long	90 kg
A619	Single Arm 750mm Long	38 kg
A620	Single Arm 900mm Long	40 kg
A101	Braced C/Lever Arm 450mm	202 kg
A102	Braced C/Lever Arm 600mm	150 kg
A103	Braced C/Lever Arm 750mm	110 kg
A104	Braced C/Lever Arm 900mm	90 kg
A105	Double 41 x 41mm Cantilever Arm 600mm	219 kg

See page 27 for Cantilever Arm Kits - 450mm - 600mm and 750mm

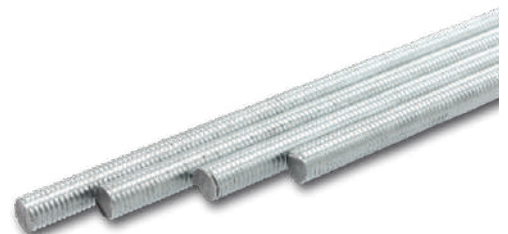
* = Uniformly Distributed Load (Kg)



Threaded Rod

3 Metre Lengths.

CODE	DESCRIPTION
A628	M6 x 3m
A629	M8 x 3m
A630	M10 x 3m
A631	M12 x 3m



Threaded Rod Accessories

CODE	DESCRIPTION
A625	M8 Rod Connector
A626	M10 Rod Connector
A647	M8 Rod End Caps (Pack 100)



Channel Nuts, Bolts and Washers

Short Spring

CODE	DESCRIPTION
A633	M6 Short Spring Channel Nut
A634	M8 Short Spring Channel Nut
A635	M10 Short Spring Channel Nut
A636	M12 Short Spring Channel Nut



Long Spring

CODE	DESCRIPTION
A638	M6 Long Spring Channel Nut
A639	M8 Long Spring Channel Nut
A640	M10 Long Spring Channel Nut
A641	M12 Long Spring Channel Nut



Plain Channel Nuts

CODE	DESCRIPTION
A643	M6 Plain Channel Nut
A644	M8 Plain Channel Nut
A645	M10 Plain Channel Nut
A646	M12 Plain Channel Nut



Hex Set Screws

CODE	DESCRIPTION
A648	6mm x 25mm Long
A650	8mm x 25mm Long
A652	10mm x 20mm Long
A654	10mm x 30mm Long
A622	10mm x 40mm Long
A656	12mm x 30mm Long
A658	12mm x 40mm Long



Hex Nuts

CODE	DESCRIPTION
A660	M6
A661	M8
A662	M10
A663	M12



Penny Washers

CODE	DESCRIPTION
A675	6mm x 25mm \varnothing
A676	8mm x 25mm \varnothing
A677	8mm x 32mm \varnothing
A678	10mm x 25mm \varnothing
A679	10mm x 32mm \varnothing



Flat Washers

CODE	DESCRIPTION
A665	6mm
A666	8mm
A667	10mm
A668	12mm



Shakeproof Washers

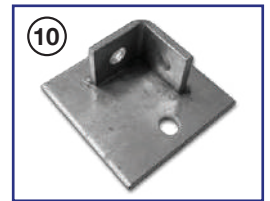
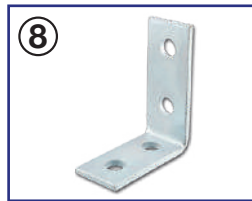
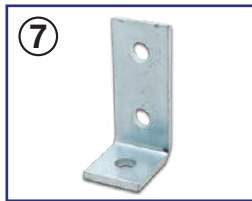
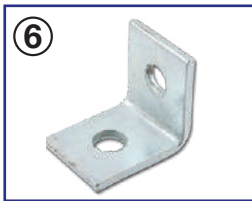
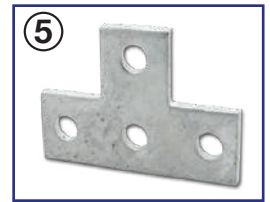
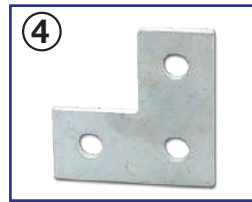
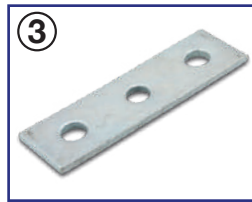
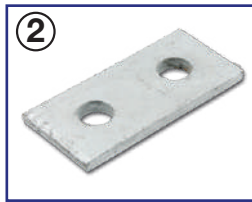
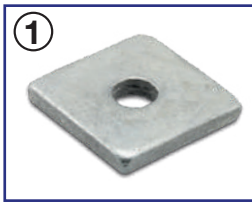
CODE	DESCRIPTION
A670	6mm
A671	8mm
A672	10mm
A673	12mm



Channel Accessories

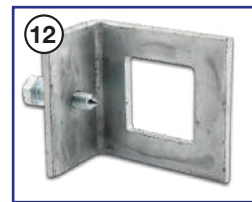
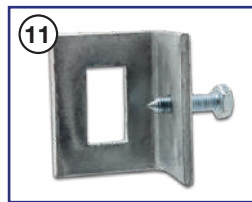
Flat Adaptor Plates

CODE	MODEL	DESCRIPTION	IMAGE NUMBER
A681	CS1/08	M8 One Hole Flat Plate 40 x 40mm	1
A682	CS1/10	M10 One Hole Flat Plate 40 x 40mm	1
A683	CS2	Two Hole Flat Plate 87 x 40mm	2
A684	CS3	Three Hole Flat Plate 123 x 40mm	3
A687	CS7	Three Hole Flat Plate Angle	4
A690	CS8	Four Hole Flat Plate Tee	5
A692	CS12	Two Hole Angle	6
A693	CS13	Three Hole Angle	7
A685	FB114	Four Hole Angle Plate	8
A686	FB115	Two Hole x Two Hole Gusset Plate	9
A688	FB106	Two Hole Base Plate	10



Window Brackets

CODE	TYPE	DESCRIPTION	IMAGE NUMBER
A611	325AL11	21 x 41mm Window Bracket Including Bolt	11
A614	325AL10	41 x 41mm Window Bracket Including Bolt	12
A609	66581711	21/41 & 41/41 Universal Strut Beam Clamp	13



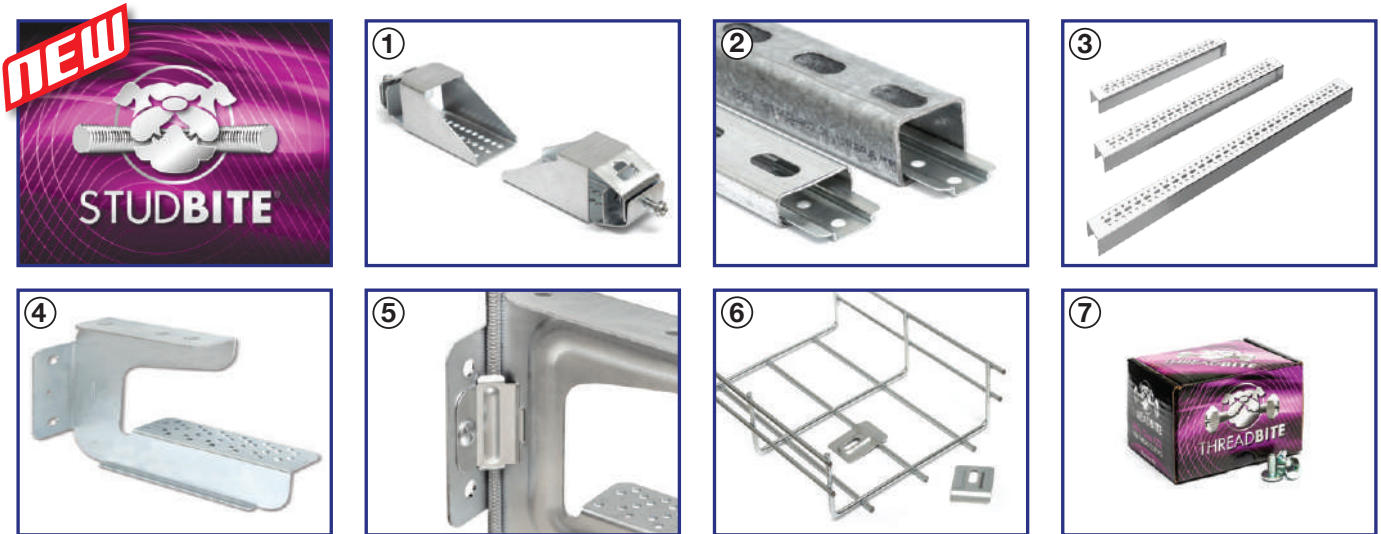
G Clamps & Purlin Clips

CODE	TYPE	DESCRIPTION	IMAGE NUMBER
A1056	FC8T	M8 G Clamp	14
A1057	FC10T	M10 G Clamp	14
A632	PC11	Purlin Clip for M10 Rod	15
A1060	VF1-8MT	Pull Down Purlin Clip M8	16
A1062	VF1-10MT	Pull Down Purlin Clip M10	16



STUDBITE® On-site easy-build Trapeze System

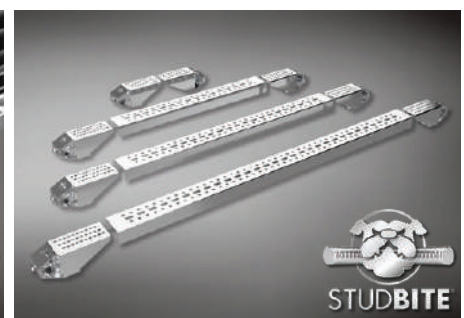
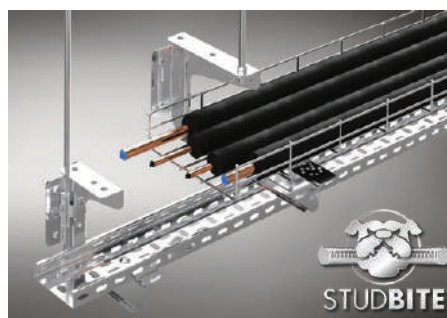
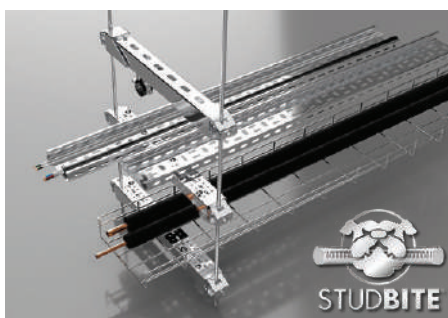
The STUDBITE® trapeze building system includes a unique range of trapeze support kits, adaptors and stud hangers that significantly reduce on-site labour costs and remove the inefficiencies from 1st-fix installations.



Steel channel and threaded rod are both among the most TRUSTED commodity fixing products used in all types of 1st-Fix installations globally! In recent times we have seen some Trapeze Brackets starting to be made off-site and also the introduction of Wire Rope Systems, which are more efficient to work with than Threaded Rod.

Our STUDBITE mission was to fix the inherent installation inefficiencies associated with Channel and Threaded Rod on 1st-Fix projects. We knew that if we could design an innovative product which overcomes the most labour intensive parts of a 1st-Fix Installation when working with these popular commodity products, we would be able to positively impact the productivity and on-site project installation efficiencies for contractors globally!

CODE	MODEL	DESCRIPTION	IMAGE NUMBER
A6009	TFCTSA	Studbite® Channel-to-Stud Adaptor (10 Pairs P/Box)	1
A6011	TFCAC	Studbite® Inverted Channel Adaptor Clamp (Pack 10)	2
A6013	TFTS300	Studbite® Channel Support - 300mm (Pack 10)	3
A6014	TFTS450	Studbite® Channel Support - 450mm (Pack 10)	3
A6015	TFTS600	Studbite® Channel Support - 600mm (Pack 10)	3
A6016	TFMFH100	Studbite® Multifix Single Stud Hanger - 100mm (Pack 10)	4
A6017	TFMFH150	Studbite® Multifix Single Stud Hanger - 150mm (Pack 10)	4
A6018	TFMFH225	Studbite® Multifix Single Stud Hanger - 225mm (Pack 10)	4
A6019	TFMFH300	Studbite® Multifix Single Stud Hanger - 300mm (Pack 10)	4
A6020	TFMFHRC	Studbite® Multifix Single Stud Hanger - Retro-Fit Clamp (Pack 10)	5
A6021	TFBTC	Studbite® Basket Tray Clamp (Pack 10)	6
A6022	TFTB610	Threadbite Self Threading Screws (250 Box)	7



Cable Tray

Unitrunk's medium and light duty cable tray is produced in pre-galvanised mild steel to BS EN 10346:2009 or galvanised in accordance with BS EN ISO1461 and conforms to BS 61537:2007.



UNITRUNK

3 Metre Length - Light Duty

CODE	SIZE
A490	50mm wide x 12mm Flange
A491	75mm wide x 12mm Flange
A492	100mm wide x 12mm Flange
A493	150mm wide x 12mm Flange

3 Metre Length - Medium Duty

CODE	SIZE
A500	75mm wide x 25mm Flange
A501	100mm wide x 25mm Flange
A502	150mm wide x 25mm Flange
A503	225mm wide x 25mm Flange
A504	300mm wide x 25mm Flange
A505	450mm wide x 25mm Flange
A506	600mm wide x 25mm Flange



Cable Tray Coupling Kit (Medium Duty)

CODE	SIZE
A520	Cable Tray Coupling (pair)
A518	Uniklip Tray Jointing Clip (Single Clip)



Cable Tray Stand Off Brackets

CODE	SIZE
A045	100mm
A046	150mm
A047	225mm
A048	300mm
A049	450mm



Cable Tray Hangers

CODE	SIZE
A507	75mm Tray Hanger
A508	100mm Tray Hanger
A509	150mm Tray Hanger
A510	225mm Tray Hanger
A511	300mm Tray Hanger



Cable Tray Flat Bend 90° (Medium Duty)

CODE	SIZE
A5200	75mm
A5201	100mm
A5202	150mm
A5203	225mm
A5204	300mm
A5205	450mm



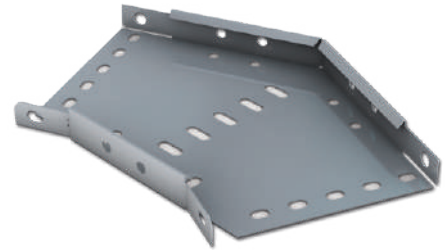
Cable Tray

Unitrunk's medium and light duty cable tray is produced in pre-galvanised mild steel to BS EN 10346:2009 or galvanised in accordance with BS EN ISO1461 and conforms to BS 61537:2007.



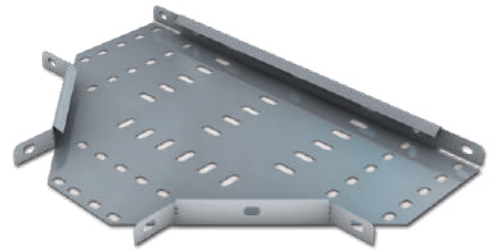
Cable Tray Flat Bend 45° (Medium Duty)

CODE	SIZE
A5210	75mm
A5211	100mm
A5212	150mm
A5213	225mm
A5214	300mm
A5215	450mm



Cable Tray Equal Tee (Medium Duty)

CODE	SIZE
A5220	75mm
A5221	100mm
A5222	150mm
A5223	225mm
A5224	300mm
A5225	450mm



Cable Tray 4 Way Equal Intersection (Medium Duty)

CODE	SIZE
A5330	75mm
A5331	100mm
A5332	150mm
A5333	225mm
A5334	300mm
A5335	450mm



Roofing Nuts and Bolts (Pack of 100)

CODE	SIZE
A580	M6 x 12mm
A579	M6 x 16mm
A581	M6 x 20mm
A582	M6 x 40mm
A583	M8 x 25mm



Galv Spray

Protects against rust and corrosion. Use as a touch up for making good, cut trunking: cable tray, channel etc.

CODE	DESCRIPTION
A513	Cold Zinc Galvanising Spray 400ml



Fixings

Expanding Bolts

CODE	DESCRIPTION
A568	M8 x 70mm Thread Projecting
A569	M10 x 85mm Thread Projecting
A571	M8 x 60mm Loose Bolt Type
A572	M10 x 70mm Loose Bolt Type



Wedge Anchors

CODE	DESCRIPTION
A574	M8 Wedge Anchor
A575	M10 Wedge Anchor
A577	M8 Drop in Anchor Setting Tool
A578	M10 Drop in Anchor Setting Tool



Assorted Self Tapping Screws

SELEKTA BOX of assorted pan head pz self tapping screws or the smaller 305pc Draper box of assorted self tapping screws.

CODE	DESCRIPTION
A588	Draper 305pc Asst Pack of Self Tapping Pan Head Screws
A608	Selekt A Box Asst Pack of Self Tapping Pan Head Screws



Self Drilling Screws

13 or 19 mm hex head self drilling screws in packs of 500, or assorted box of PZ Pan head self drillers. Plus Adaptor for Hex head screws.

CODE	DESCRIPTION
A695	5/16" Hex Head Self Drill Screws 13mm Long (Qty 500)
A696	5/16" Hex Head Self Drill Screws 19mm Long (Qty 500)
A697	5/16" Hex Head Magnetic Nut Spinner for above screws
A691	Asst Pack of PZ Headed Self Drill Screws



Metal Self Drill Plasterboard Fixing

CODE	DESCRIPTION
A698	38mm Long Zinc Alloy Fixings complete with Screws (Pack 100)



Wood Screws

CODE	DESCRIPTION
A5891	1" x N° 8 PZ C/Sunk (Qty 200)
A5892	1-1/4" x N° 8 PZ C/Sunk (Qty 200)
A5893	1-1/2" x N° 8 PZ C/Sunk (Qty 200)
A593	2" x N° 10 PZ C/Sunk (Qty 200)
A594	2-1/2" x N° 10 PZ C/Sunk (Qty 200)



Assorted Wood Screws

CODE	DESCRIPTION
Q923	Forgefix PRO Assorted Pack of 1100 pc C/S PZ Woodscrews
A5898	Selektabox Assorted Countersunk Woodscrews PZ



Fixings

Plastic Wall Plugs

CODE	DESCRIPTION
A595	Red Plug to Suit Screw Sizes 6, 8 and 10 (Pack 100)
A598	Brown Plug to Suit Screw Sizes 10, 12 and 14 (Pack 100)



Wall Plug and Screw Sets

CODE	DESCRIPTION
A596	Trade Tub 1 (400 x 2" N°10 Wood Screws & Brown Plugs*)
A599	Trade Tub 2 (500 x 1-1/2" N°8 Wood Screws & Red Plugs*)
A601	Fix A Box. Assorted Brown/Red Plug and Screw Set

*Each Trade Tub also includes either a 6 or 7mm masonry drill bit and a N°2 PZ Driver Bit



SELEKTA BOX (M5 Nuts Bolts and Washers)

Good assortment of Small M5 Nuts and bolts ideal for both service and installation engineers.

CODE	DESCRIPTION
A6010	Assorted M5 Nuts, Bolts & Washers



Dual Socket Bolt

Drill 6mm hole into concrete, screw in fixing to hang M8 or M10 Rod. Suitable for fitting overhead installations, suitable for many substrates. Approved for hollow core slabs.

CODE	DESCRIPTION
A6000	6mm Ø x 55mm. Dual thread for M8 or M10 Rod



Dual Back Plates

Zinc plated backplate for ceiling bolt takes either M8 or M10 Rod. Cost effective versatile rod hanger.

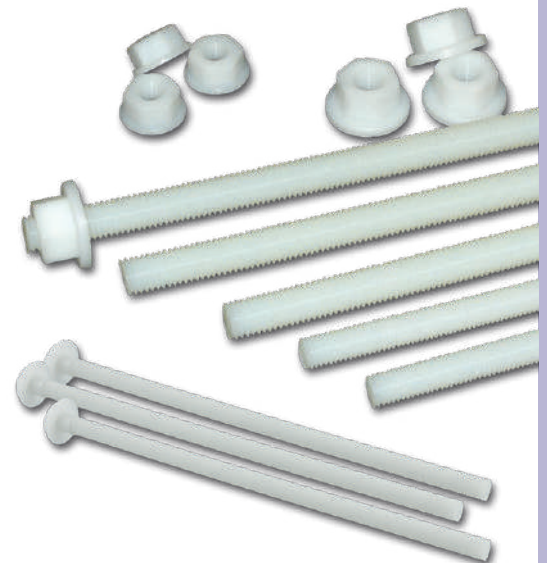
CODE	DESCRIPTION
A6005	Dual for M8/M10



Nylon Threaded Rod

Threaded Nylon Rod pre-cut to 1M Lengths in 3 thread sizes. M8, M10 & M12. Buffalo Bolts come pre-cut to 305mm long with a moulded domed head to one end of rod. Range of nuts also available.

CODE	SIZE
A449	M8 x 1M Screwed Rod
A450	M10 x 1M Screwed Rod
A451	M12 x 1M Screwed Rod
A454	M8 Washer Faced Nut
A443	M10 Nylon Washer
A455	M10 Washer Faced Nut
A456	M12 Washer Faced Nut
A458	M10 Domed Nut
A459	M10 Hex Full Nut
A430	M12 x 305mm Buffalo Bolt



Recommended maximum safe working loads for Nylon Threaded Rod.

M8 - 50kg M10 - 80kg M12 - 120kg M12 Buffalo Bolts - 120kg

Please note figures quoted are for vertical loads only. No data is available for inclined or horizontal loads.

Care should be taken not to over tighten nuts, they should be tightened by hand and then given half a turn with a spanner.

Type 1 Brackets

These flat-packed, self assembly brackets provide a professional finish to the installation of wall mounted outdoor condensing units. The Type 1 brackets have uprights that mount directly onto the wall via 6 shell anchor bolts provided, maximising the rigidity of the installation. For improved corrosion resistance all metal now receives a 100% zinc plating, followed by a hard ED coating before being finished with an external grade polyester powder coating to RAL 7032.

EASY-FIT Brackets Type 1

CODE	MODEL
A303	TYPE 1-60kgs Bracket
A304	TYPE 1-90kgs Bracket
A305	TYPE 1-140kgs Bracket



Specification

CODE	DESCRIPTION	SAFE WORKING LOAD	MAX WORKING LOAD	UPRIGHT	SUPPORT ARM
A303	Type 1 Bracket - Small	60kg	120kg	450mm	480mm
A304	Type 1 Bracket - Medium	90kg	180kg	500mm	530mm
A305	Type 1 Bracket - Large	140kg	280kg	550mm	580mm

Type 2 Brackets

Designed to suit all brands of air conditioner, ACR brackets support outdoor condensing units mounted on exterior walls.

Available in three sizes to mount units up to 140kg.

All brackets are tested to twice the rated safe working loads.

All crossbars, arms and uprights are made from electro-galvanised steel, polyester powder coated. Colours: CB2 brackets are RAL7032, CBE is RAL9002.

CB-2 Brackets

CODE	MODEL
A1301	TYPE 2-60kgs Bracket
A1306	TYPE 2-90kgs Bracket
A1307	TYPE 2-140kgs Bracket



Specification

CODE	DESCRIPTION	SAFE WORKING LOAD	MAX WORKING LOAD	CROSSBAR	UPRIGHT	SUPPORT ARM
A1301	CB-2 Bracket - Small	60kg	120kg	720mm	400mm	400mm
A1306	CB-2 Bracket - Medium	90kg	180kg	900mm	500mm	500mm
A1307	CB-2 Bracket - Large	140kg	280kg	1100mm	550mm	540mm

Type 3 Brackets

The unique interlocking mechanism of the Type 3 condensing unit brackets enable the arms to be joined to the uprights in a matter of seconds. A spring-Lock automatically secures the joint, preventing the arms being dislodged accidentally, for improved corrosion resistance all metal now receives a 100% zinc plating, followed by a hard ED coating before being finished with an external grade polyester powder coating to RAL 7032.

EASY-FIT Brackets Type 3

CODE	MODEL
A287	TYPE 3-90kgs Bracket
A288	TYPE 3-140kgs Bracket



Specification

CODE	DESCRIPTION	SAFE WORKING LOAD	MAX WORKING LOAD	CROSSBAR	UPRIGHT	SUPPORT ARM
A287	Type 3 Bracket - Medium	90kg	180kg	900mm	500mm	500mm
A288	Type 3 Bracket - Large	140kg	280kg	1040mm	550mm	540mm

Condensing Unit Drip Trays

Drip trays to fit condensing unit brackets to prevent dripping water when heat pumps are on defrost. Available in metal or plastic.

Metal Trays

CODE	METAL TYPE
A275	Small - 800 x 400 x 50mm
A276	Large - 1100 x 400 x 50mm

Plastic Trays

CODE	PLASTIC TYPE
A278	Small Plastic 790 x 390mm
A279	Large Plastic 940 x 420mm



Condensing Unit Guards

Quick and easy to assemble, these guards protect outdoor a/c units against accidental damage and vandalism. All panels are made from perforated electro-galvanised steel, textured polyester powder coated – RAL7032. Additional base panels available for high wall mounted units. Additional back panels available for floor standing units. Four, hex-key security bolts and sliding panels for quick and easy maintenance.

CODE	MODEL
A1260	Small (CG-S)
A1261	Medium (CG-M)
A1262	Large (CG-L)
A1263	Extra Large (CG-XL)

Base Panel

CODE	TYPE
A1264	Base Panel for Small Guard (CG-BPS)
A1265	Base Panel for Medium/Large Guard (CG-BPM)

Front/Back Panel

CODE	TYPE
A1268	Front/Back Panel for Small Guard (CG-FPS)
A1269	Front/Back Panel for Medium Guard (CG-FPM)
A1270	Front/Back Panel for Large Guard (CG-FPL)
A1271	Front/Back Panel for Extra Large Guard (CG-AF)



Model	EXTERNAL DIMENSIONS MM			INTERNAL DIMENSIONS MM			Weight
	Height	Width	Depth	Height	Width	Depth	
Small	750mm	1050mm	460mm	720mm	1020mm	450mm	18kg
Medium	1150mm	1150mm	650mm	1120mm	1120mm	640mm	27kg
Large	1450mm	1150mm	650mm	1420mm	1120mm	640mm	30kg
Extra Large	1800mm	1150mm	650mm	1770mm	1120mm	640mm	40kg

Cantilever Arm Kit

Cantilever arm kits are available in 3 different sizes. They are a quick and easy solution to supporting air conditioning units and heat pump systems to the wall. These kits are supplied flat packed with all the nuts, bolts, washers, wall fixings and black end caps required to assemble the brackets and mount them to the wall.

450 C/Lever Arm Kit Safe Working Load 250kg per arm
 600 C/Lever Arm Kit Safe Working Load 190kg per arm
 750 C/Lever Arm Kit Safe Working Load 150kg per arm

CODE	TYPE
A799	450mm Cantilver Arm Kit (450 deep x 750 high)
A800	600mm Cantilver Arm Kit (600 deep x 750 high)
A801	750mm Cantilver Arm Kit (750 deep x 750 high)

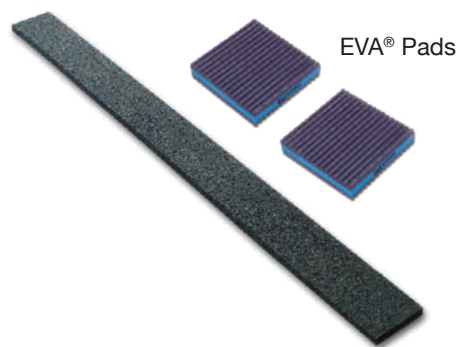


Heavy Duty Anti Vibration Pads and Strips

The re-cycled rubber anti-vibration mounting strips are a low cost option for mounting air conditioning units, they reduce vibration, dampen sound and come in a 1 metre long strip.

The EVA® anti-vibration pads are designed to effectively eliminate vibrations and reduce noise with its EVA® core and ribbed rubber outer.

CODE	TYPE
A977	Anti Vibration Strip 1000 x 75 x 15mm
A975	MP-4E EVA® Pad 100 x 100 x 20mm
A978	MP-6E EVA® Pad 150 x 150 x 20mm



H - Frame - Multi Purpose Support

The H Frame Set is a quick, versatile and economical solution for supporting pipework, duct, cable ladders/trays or any combination of these. You provide your own strut, keeping the duct and pipe installations low-cost and totally flexible by fabricating the framework on-site.

Comes complete with 305 mm² or 450 mm² feet.

(Slotted channel shown not included with H-Frame)

The kit includes: Two AV Mats, two feet, two Unistrut Inserts, two L Brackets, four M10 Bolts and four Square Channel Nuts.

CODE	SIZE
A993	Big Foot H-Frame Set with 305 x 305mm ² Feet
A994	Big Foot H-Frame Set with 450 x 450mm ² Feet



Ultralite® Slabs

Ultralite® Slabs look and perform like concrete slabs but at only 13kg they are lightweight and very easy to handle and transport.

Constructed using an encapsulated polystyrene core covered in a reinforced cement coating.

Safe working load 56kg per 50mm diameter.

CODE	SIZE
A284	600 x 600mm



Channel Sockets 1/2" Drive x 17mm

These sockets make installing slotted channel so much easier.

Unlike standard round 17mm sockets that get stuck in the channel, these British made sockets are specifically engineered with flat sides that fit in & out of the slotted channel with ease. Channel Sockets are available in 2 sizes, one for shallow channel 41 x 21mm and one for deep channel 41 x 41mm.

CODE	DESCRIPTION
A6070	17mm Channel Socket for 41 x 21mm Channel
A6071	17mm Channel Socket for 41 x 41mm Channel



Cooleo Condensing Unit Blocks

Made from recycled rubber, these feet can support pipework, cable tray and can be used to mount air conditioning units, air source heat pumps and a variety of outdoor equipment. Available in four sizes. 21 x 41mm galvanised steel strut is supplied bonded to the rubber. Drain slots moulded to underside of foot.

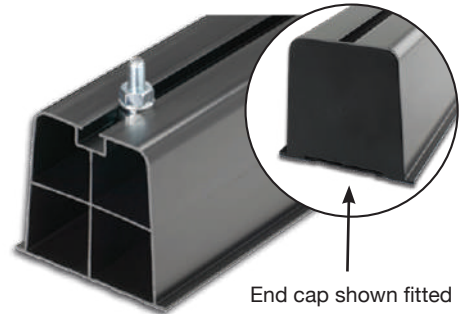


CODE	SIZE
A982	250 x 185 x 100mm
A983	400 x 185 x 100mm
A984	600 x 185 x 100mm
A985	1000 x 185 x 100mm

Plastic Condensing Unit Block

Available in 450mm and 1000mm lengths. Now available with matching black end caps. Each block comes complete with 2 bolts per foot.

CODE	SIZE
A979	450mm Long Condensing Unit Block
A980	1000mm Long Condensing Unit Block
A981	End Cap to suit above



Roof Support Systems

FSW offer a range of roof support systems which are simple and universal framework that can be used to support anything on a flat roof.

They are designed to spread the weight of plant on delicate roof surfaces and enables maintenance of the roof without the costly removal of equipment from it.

Roof Support Systems are ideal for: condensers packaged units of all sizes, split or VRV air conditioning systems, ventilation units, pipework and ductwork.

Roof support systems are quick to assemble and adjust. Framework intersections are tightened into position to provide a rigid and sturdy structure. Supplied flat-pack for easy transportation and constructed from hot dipped galvanised metalwork.

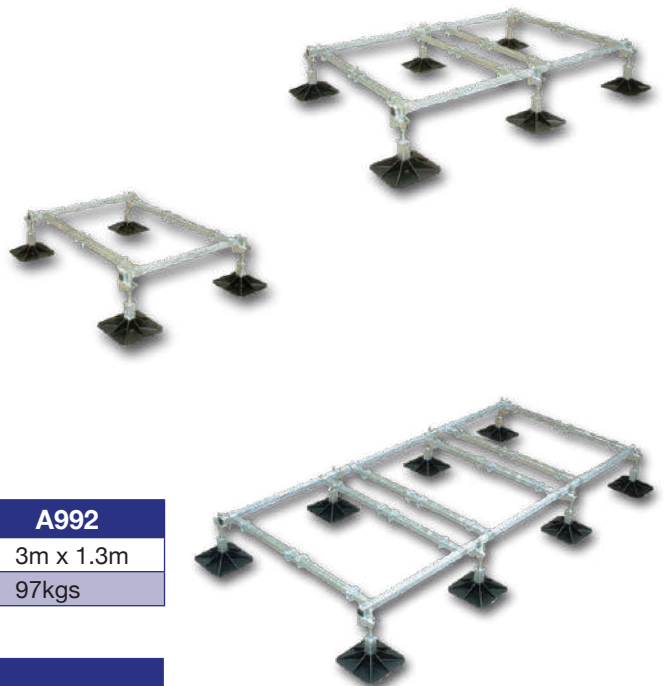
Please Note: The manufacturer of these systems take no responsibility for the condition of the roof on which their equipment is to be used. You must ensure that the substrate on which the roof support system is intended for use is structurally sound enough to take the weight and point loadings they have indicated.

Roof support systems must be installed in line with the guarantees and recommendations of the manufacturer of the roofing system. The manufacturer of PVC membranes should advise on the susceptibility migration of plasticizers and specific recommendations should be adhered to so that the roof guarantee is not affected.

We offer a range modular frameworks available for supporting a variety of small condensing units.

For flexibility all leg assemblies and cross bars on the modular framework slide up and down to the required location.

Apart from a wide range of packaged roof support systems, we also offer a bespoke design service creating roof support systems specific to each customer's requirements.

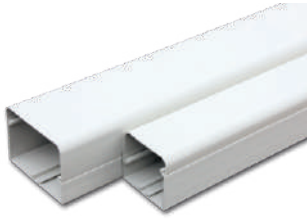


DIMENSIONS	A990	A991	A992
Framework	1m x 1.3m	2m x 1.3m	3m x 1.3m
Weight	42kgs	70kgs	97kgs

CODE	TYPE
A990	Roof Support 2
A991	Roof Support 4
A992	Roof Support 6

Aspen Xtra Economy Plastic Trunking

Easy-to-use ivory colour plastic trunking and accessories for professional installations.



Straight Duct

CODE	TYPE
A911	D-70
A912	D-105



Duct End Caps

CODE	TYPE
A914	DC-70
A915	DC-105



Outlet Cover

CODE	TYPE
A916	WC-70
A917	WC-105



90° Flat Bend

CODE	TYPE
A921	FB-70
A922	FB-105



45° Flat Bend

CODE	TYPE
A923	FB-105



90° Elbow (Internal)

CODE	TYPE
A926	EB-70
A927	EB-105



90° Elbow (External)

CODE	TYPE
A954	EIN-70
A955	EIN-105



Duct Couplers

CODE	TYPE
A931	CP-70
A932	CP-105



Tee Joint

CODE	TYPE
A935	TJ-150



Flexible Joint

CODE	TYPE
A939	FJ-70
A940	FJ-105



End Socket

CODE	TYPE
A952	DE-70
A953	DE-105



Flat Wall Rosette

CODE	TYPE
A964	FR-70
A965	FR-105



Ceiling Rosette

CODE	TYPE
A970	WR-70
A971	WR-105



Reducer Joints

CODE	TYPE
A968	RJ-70/105



Fast Clip

CODE	TYPE
A957	B6100



Please note: All items shown above are also available in white, to order only.

Inoac Plastic Trunking

Ivory colour Inoac trunking and fittings are competitively priced and produced to the highest of standards. This top quality versatile range of PVC trunking is designed to hide unsightly pipework in air conditioning and refrigeration. It is aesthetically pleasing and will blend in with an assortment of environments, being suitable for both internal and external applications.



Straight Duct

CODE	TYPE
A1000	CD-75
A1001	CD-100



Outlet Cover

CODE	TYPE
A1002	NW-75
A1003	NW-100



Elbow (Flat)

CODE	TYPE
A1004	NE-75
A1005	NE-100



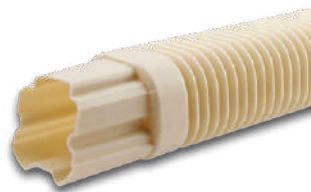
Corner Cap

CODE	TYPE
A1006	NA-75
A1007	NA-100



Elbow (Vertical)

CODE	TYPE
A1008	NC-75
A1009	NC-100



Flexible Joint

CODE	TYPE
A1010	NF-75
A1011	NF-100



Wall Cap

CODE	TYPE
A1012	NK-75
A1013	NK-100



45° Elbow (Flat)

CODE	TYPE
A1014	NM-75
A1015	NM-100



Socket

CODE	TYPE
A1016	NS-75
A1017	NS-100



Tee

CODE	TYPE
A1018	NT-75
A1019	NT-100



45° Elbow (Vertical)

CODE	TYPE
A1020	NU-75
A1021	NU-100



Universal Elbow (Flat)

CODE	TYPE
A1022	NX-75
A1023	NX-100



Universal Elbow (Vertical)

CODE	TYPE
A1024	NZ-75



End Socket

CODE	TYPE
A1025	NR-75



Please note: All items shown above are also available in white, to order only.

Inaba Denko Slimline Black Plastic Trunking

The NEW range of Inaba Denko internal and external trunking will ensure that the air conditioning refrigeration pipes are protected with a professional finish. Available in Black only from stock. UV resistant, fire proof and can be painted to suit many indoor and outdoor applications.



Straight Duct

CODE	TYPE
A1150	75mm
A1151	100mm



45° Flat Bend

CODE	TYPE
A1152	75mm
A1153	100mm



45° Elbow Bend

CODE	TYPE
A1154	75mm
A1155	100mm



90° Flat Bend

CODE	TYPE
A1156	75mm
A1157	100mm



90° Elbow

CODE	TYPE
A1158	75mm
A1159	100mm



Wall Cover

CODE	TYPE
A1160	75mm
A1161	100mm



Connection Piece

CODE	TYPE
A1162	70mm
A1163	100mm



Reducer Joint

CODE	TYPE
A1164	100-75mm



Tee Joint

CODE	TYPE
A1165	75mm
A1166	100mm



Wall Rosette

CODE	TYPE
A1167	75mm
A1168	100mm



Flat Wall Rosette

CODE	TYPE
A1169	75mm
A1170	100mm



Duct End

CODE	TYPE
A1171	75mm
A1172	100mm



Think I.T. Cooling Think Innovation Think s-MEXT

Introducing the high-precision **s-MEXT DX Computer Room Air Conditioning range** from Mitsubishi Electric. This reliable packaged system combines the compact s-MEXT indoor unit and the award winning Mr Slim Power Inverter outdoor unit, to deliver the high sensible cooling and close control of temperature and humidity needed for business-critical I.T. equipment – all in an easy-to-install, high efficiency plug and play system.



Think I.T. Cooling. Think Mitsubishi Electric.
Visit thinkITcooling.co.uk

THINK
I.T.COOLING



UPGRADE YOUR TOOLBOX

D-TEK 3[®]

Introducing the new **JAVAC Edge D-TEK 3** refrigerant gas leak detector designed to help you get your job done faster and a versatile tool for everyday HVAC/R maintenance and repair.

- Detects all HCFCs, HFCs, HFOs, blends (including A2Ls), ammonia & SF6
- Ultra high sensitivity to all standard refrigerant gases, 1gm/yr
- Easy-to-change sensor
- Quick charge lithium ion battery
- Longest sensor life in the industry
- Optional CO2 sensor gives you two instruments in one
- Backed by a two year guarantee

Instore or online today!
www.fsw.uk.com



LED display

Headphone jack for audible alerts



New, redesigned infrared sensor with easy field replacement

